

Chip Wood • Leafy Branches • Straw and even Vegetables **ohashi** Chippers

 **Mobile
Chippers**

ES283D

FEATURES

- * Maximum power in mobile, compact, light weight body
- * Control process speed to produce super fine or larger chips
- * For composts, mulching, making pellets or bio-energy
- * Made in Japan - Japanese quality and reliability



Max. diameter
18 cm

Max. output
25 HP

Weight
1.2 t

Patent Pending



Discharge into truck



Easy to load on truck



Leafy branches OK



No Stress micro-computer

Wood Chipper ES283D Basic performance

Chipping to meet your demands

Wood (High Speed)



Wood (Slow Speed)



Use for composts, mulching, making pellets, pathways, landscaping or bio-energy. Choose the size to suit your needs! * Large chips, called pinchips may be occasionally discharged in material.

Adjusting chip size



The processing speed is adjustable by turning the "Flow Controller". Chip size can be changed between 2-16mm.

* Uniform sized chips are produced with screen. (Screens are optional)

Fuel-saving mode



30% fuel reduction

Easily switch between "Normal mode" and "Branch mode". Small branches of max. dia. 10cm are chipped with "Branch mode", and more fuel savings can be achieved.

Micro-computer No Stress control

Micro-computer between the feed roller and engine reduces engine loading stress and prevents damage. Developed in-house using years of mechanical know-how.

Safety design

Brake Lever

The brake lever is gripped to transport the vehicle. When released the parking brake will be activated automatically.

Feed Roller Safety Bar

Allows user to stop the feed roller in an emergency and if necessary without using their hands.

Easy rotor operation

NEW



The rotor clutch can be engaged/disengaged by flicking a switch. New function for this model.

Economical Feeding blades

NEW



Feeding blades on feed roller are replaceable. If the blades become worn, you only need to change blades.

Automatic No Stress Control



An automatic hydraulic No Stress control system, communicates with the feed roller ensuring stable and efficient feeding of materials.

Excellent chipping efficiency

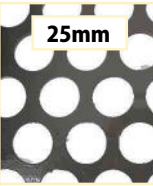
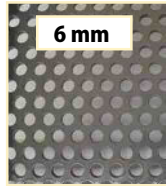
- Finely chip leafy branches.
- Wide hopper allows easy feeding of leafy branches.
- Robust and durable body.
- Change between reverse / forward feed with one switch.
- Easily transportable at just over 1.2 t.
- High grade knife specification.

To chip materials where something hard like nails may be attached the enhanced knife is recommended.

Chip Uses and Options

Choose chip size with uniform dimensions

Screens with various hole sizes



To adjust chip size and to produce uniform sized chips just change the screen. Side shooter is essential.
Screens with various hole sizes: 6, 8, 10, 12, 18, 25 mm
※6mm holed screen must be used with vacuum collector.

Processed chips



6 mm holed screen

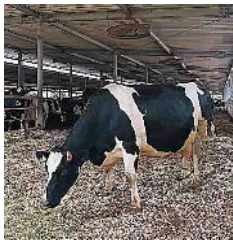


12 mm holed screen

Different chip sizes suit different purposes. Choose the hole size of the screen based on your needs.

Chip Applications

Bedding



Compost



Pathways



Pellets



Mulching



Heat Water



To discharge chips below

Side shooter



Conveniently discharge chips below when chipping in places where a high shooter may cause obstructions like an orchard.

- ※Can not be used in combination with the high shooter.
- ※Screen available (Screen hole size should be 8mm or more.)
6mm holed screen must be used with a vacuum collector.

For chipping grass and bark

Flat blade set



Attaching flat blade to the feed roller to avoid clogging on sharp edges.

- ※ Grass containing more water, should be discharged via the side shooter because chipped grass might clog up the high shooter. Do not use with screen.

Collecting chips effectively

Vacuum Collector 3BMY150XN50/60•3BMY150XNEG

- Attaching the optional vacuum collector to the low dispatch unit allows processed chips to be efficiently collected and packed without raising dust.
- The collector is on casters for transportation.
- Two types, motor drive and engine drive, are available.
- ※Can't be used in combination with the shooter.
- ※Available with screen.
6mm holed screen must be used with a vacuum collector.



Equipped with cyclone chip collector “ESC283D”

■ Less dust while discharging

Dust can be a problem at chipping sites.
ESC282D can decrease the dust with attached cyclone.

■ Cyclone can be easily removed / attached

■ Chips can be directly discharged to a large easily attached flexi bag.

Chips are discharged directly to the flexi bag, which is ready to move.

※Can not be used in combination with vacuum collector, side shooter or screen.

※Flexi bags are not included.



Specifications

Factor	ES283D	ESC283D
L×W×H (mm)	In use - 2830×1044×1940 In transport - 2200×1044×1633	In use - 2830×1044×2510 In transport - 2200×1044×1800
Weight (kg)	1220	1250
Engine	Kubota D1305 Vertical, water-cooled, 4-cycle diesel engine	
Max. Output {HP (kw)}	25.2 (18.5)	
Fuel	Automobile diesel	
Fuel Tank (L)	30.0	
Fuel Consumption(L/h)	4.5	
Drive type	Self-propelled crawler type	
Drive speed (km/h)	Forward - 1st : 0.9, 2nd: 2.2 Reverse - 1st: 0.9, 2nd: 2.2	
Drive system	Belt clutch, V belt	
Max. chipping dia(mm)	180	
Blade	Chipper knife 2pcs, Counter knife 1pc, Shredder knife 12pcs	
Infeed dimensions	190×198	
Feeding speed	0~55 m/min (adjustable)	
Feeding control	Automatic hydraulic No Stress control system	
Output type	Air propeller type	
Output shooter height	1940; 2420 (with extension)	1240
Output shooter angle	Variable in 270°	

* Specifications are subject to change without notice.



ohashi inc.

401 SAKIMURA CHIYODA KANZAKI
SAGA JAPAN 842-0065
EUROPE TEL +44-20-3286-2252
JAPAN TEL +81-952-44-3135
E-MAIL global@ohashi-inc.com
WEB www.ohashi-inc.com